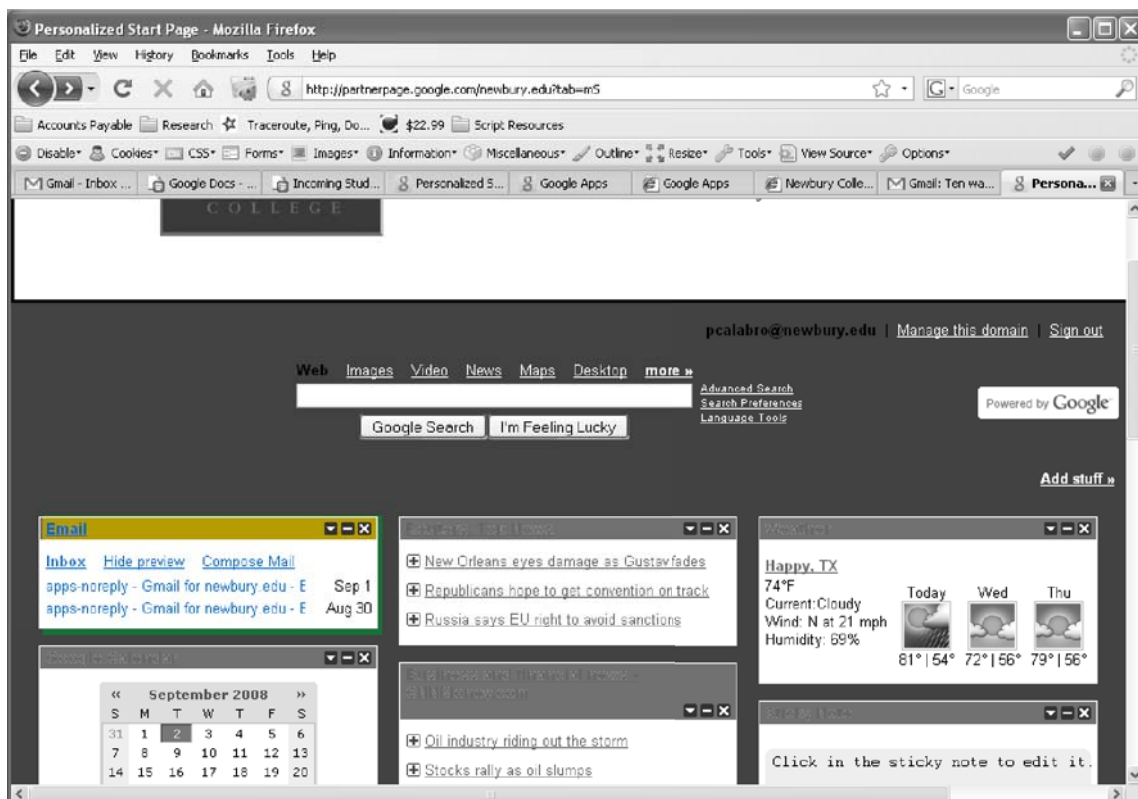


Dear Incoming Student,

On behalf of the Newbury College IT Department,
We would like to welcome you to the start of an exciting new year!

To start things off right, we would like to explain how to login to your NEW email account.
What you should do is:

1. Log into <http://my.newbury.edu>
2. Find the **Email** Gadget:



3. If you're logged in (which in this case, I am), you'll have quick access to recent email, the ability to compose a message, and so forth. If not, you'll see a link to "login". Click it.
4. To login, you'll use the following login credentials:

User ID: **<Your Account Name Given to You During Orientation>** (in most cases this is simply: **firstname.lastname**)

Password: **<Your Student ID #>**

5. That should do it. You now have access to over 6 gigabytes of storage, an abundance of cool and useful features, and the simplicity that Gmail offers.

Enjoy!

Your Friends at the Newbury College IT Department